

# Активная лексика

Уроки 15-

s+h= [ʃ]

shelf



sheep

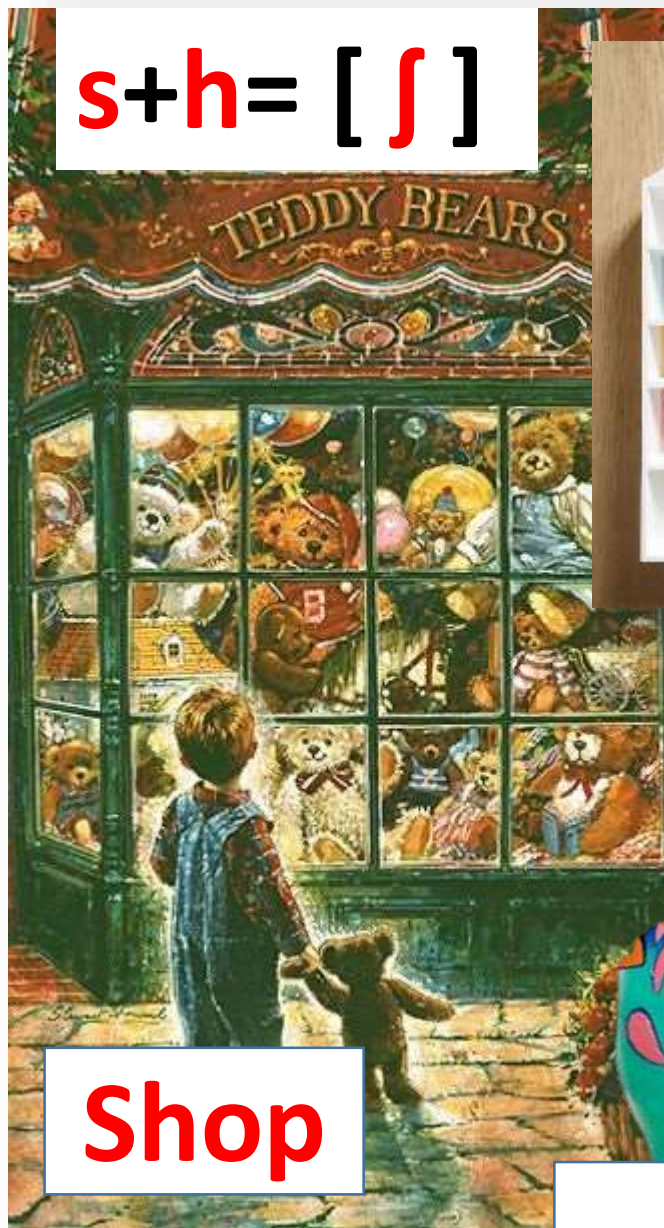


ship

Shop

fish

dish



1

2

3

4

cab

mad

ram

rap

dab

pad

ban

sap

gab

rad

fan

tap

jab

sad

man

bat

lab

bag

pan

cat

nab

lag

ran

fat

tab

nag

tan

hat

bad

rag

van

mat

dad

sag

cap

pat

fad

tag

lap

rat

had

bam

map

sat

lad

ham

nap

vat

**lamp**



**cat**



**bag**



**cap**

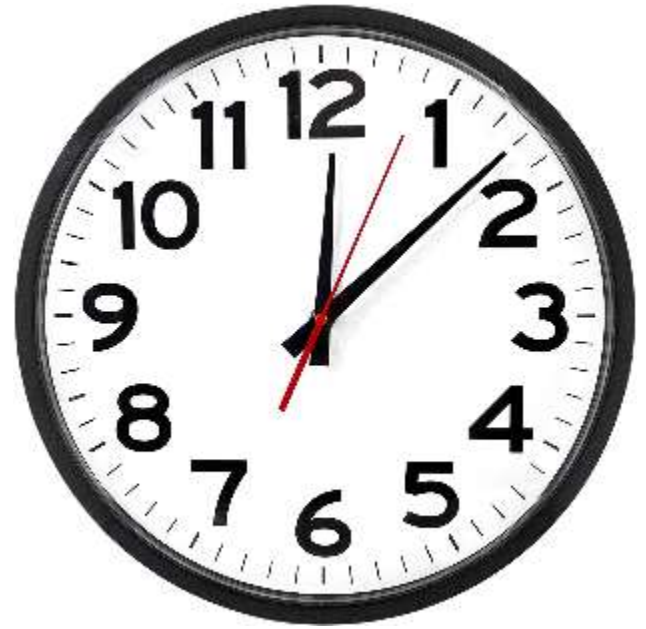


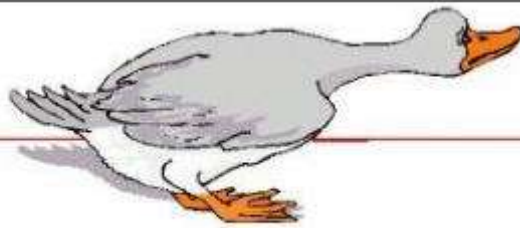
**ram**



**ant**

cock, clock, sock, duck, black





-oo-

book

goose

cool

crook

food

broom

good

stood

hood

stool

look

stoop

moon

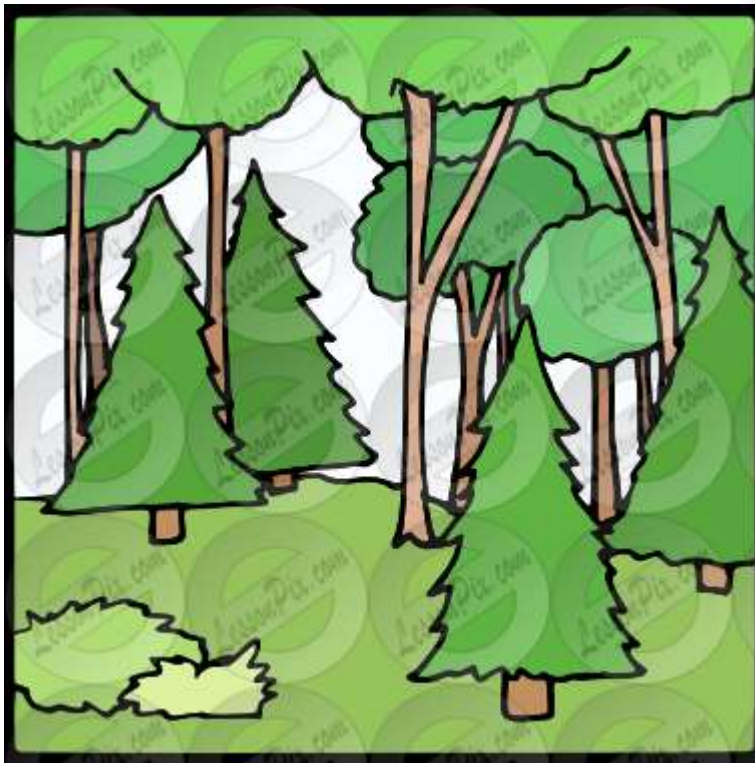
shook

soon

drool



**Book, wood, hook, cook**

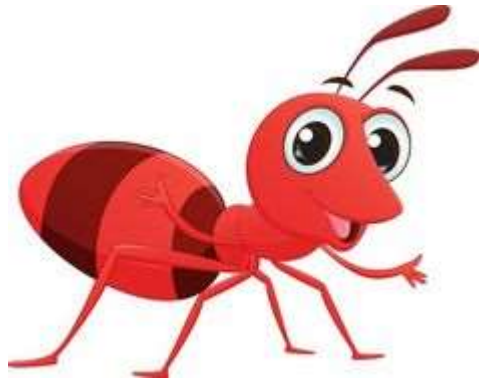
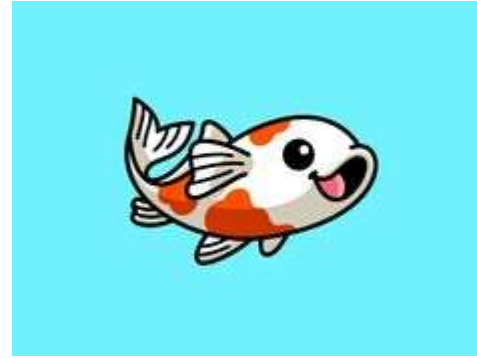
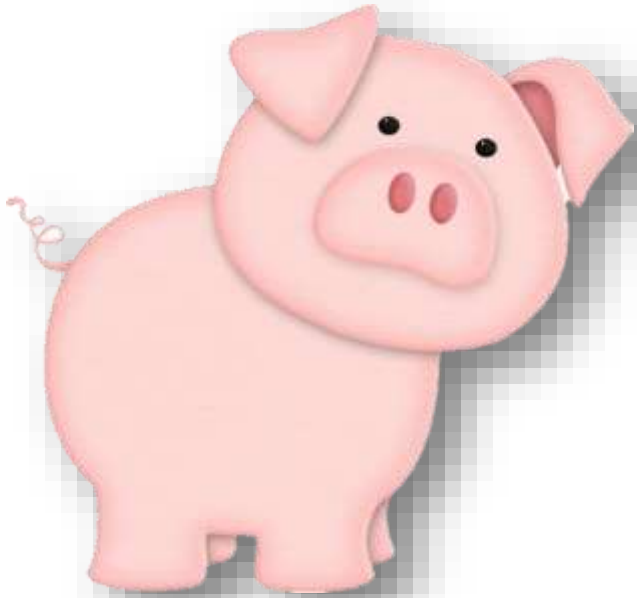


**big** little





**big** little



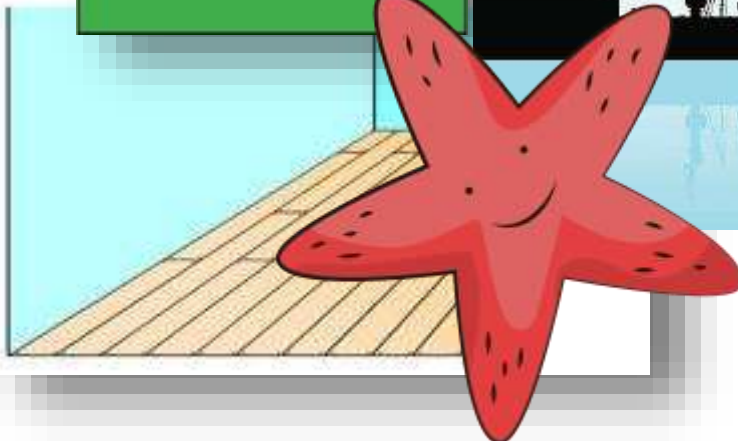
a+r=[a:]

o+r=[o:]



a+r=[a:]

o+r=[ɔ:]



# What is it?



# What is it?

